

# RCI - Incremental Optical Encoders

PRECILEC optical incremental encoders are designed for accurately measuring speed and position of rotating shafts in industrial environment: machine tools, motor drives ...

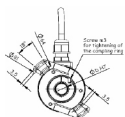
They use a differential optical measurement and a ratio-metric processing of the signal for minimizing the temperature and photodiode aging effects.

Their universal complementary push-pull output interface and their large supply voltage range make them very easy to connect to most of electronic control units with high noise immunity.

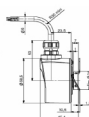
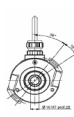
## SIZE 58 - BLIND SHAFT



RCI58 B BS



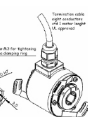
RCI58 S/T BS



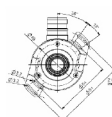
## SIZE 58 - HOLLOW SHAFT



RCI58 B HS



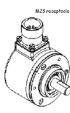
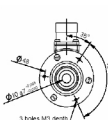
RCI58 S/T HS



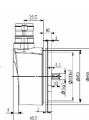
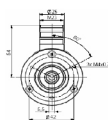
## SIZE 58 - FULL SHAFT



RCI58 B FS



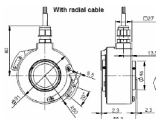
RCI58 S/T FS



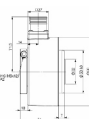
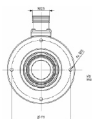
## SIZE 90 - FULL SHAFT



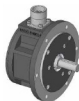
RCI90 B HS



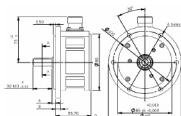
RCI90 S/T HS



## FLANGE RE.0



RCI444R FS



# RCI - Incremental Optical Encoders

## MAIN CHARACTERISTICS

Size	Output signals	Supply voltage	Frequency	Impulses	Type / max speed	Diameter	Fixation	Channel way	IP	Connection
------	----------------	----------------	-----------	----------	------------------	----------	----------	-------------	----	------------

RCI58	B (Universal)	4,5 – 30 Vdc	300 kHz	1024 /2048	BS blind shaft / 10 000 rpm	6, 8, 10, 12, 14 & 15 mm	2 or 3 arms spring plate	A before B	IP65	Cable, connector M23 or MILP
					HS Hollow shaft / 6 000 rpm					
					FS Full shaft / 10 000 rpm					
	T (Push-Pull)	5 – 30 Vdc	300 kHz	50 – 10 000	BS blind shaft / 6 000 rpm	6, 8, 10, 12, & 14 mm	2 or 3 arms spring plate	B before A	IP65	Cable, connector M23 or connector MILP
		11 – 30 Vdc	100 kHz	Upon request	HS Hollow shaft / 6 000 rpm					
	S (RS422)	5 Vdc	300 kHz	50 – 10 000	HS Hollow shaft / 6 000 rpm	6, 8 & 10 mm	Standard, square flange, or synchro	B before A	IP65	Cable, connector M23 or connector MILP
100 kHz			Upon request	FS Full shaft / 9 000 rpm						

RCI90	B (Universal)	4,5 – 30 Vdc	300 kHz	1024 / 2048	HS Hollow shaft / 3 000 rpm	20, 25, & 42 mm 1 inch	1 arm spring plate	A before B	IP65	Cable, connector M23 or connector MILP
	T (Push-Pull)	11 – 30 Vdc	100 kHz	1 – 10 000	HS Hollow shaft / 3 600 rpm	12, 20, 25, & 30 mm	Double 1 arm spring plate	B before A	IP65	Cable, connector M23
	S (RS422)	5 Vdc								

RCI444R	4 (Push-pull)	4,5 – 30 Vdc	300 kHz	1024 / 2048	FS Full shaft / 10 000 rpm	7 and 11 mm	Flange RE.0444	IP65	Cable, M23 connector or MILP connector
		11 – 30 Vdc	100 kHz	1 - 2500	FS Full shaft / 6 000 rpm				
	3 (RS422)	4,5 – 30 Vdc	300 kHz	1024 / 2048	FS Full shaft / 10 000 rpm				
		5 Vdc	100 kHz	1 - 2500	FS Full shaft / 6 000 rpm				
					FS Full shaft / 10 000 rpm				
					FS Full shaft / 6 000 rpm				

- We reserve the right to modify technical characteristics in the interest of technological advance -

**For more detailed information, please refer to the individual datasheets**